

### Specifications

Nominal Voltage	12V	
Nominal Capacity	56AH	20HR (1.75V/cell)
Dimension	Length	229mm (9.02 inches)
	Width	138mm (5.43 inches)
	Height	200mm (7.87 inches)
	Total Height (with Terminal)	203mm (7.99 inches)
Approximate Weight	18.05 kg (39.80 lbs)	
Battery Type	Valve Regulated Lead-Acid Battery, AGM Design	
Terminal Type	IT	
Max. Discharge Current	825A	
Internal Resistance	5mΩ	
Conductance Value	1100S	
Operating Temp. Range	Discharge:	-15°C (5°F)~50°C (122°F)
	Charge:	0°C (32°F)~40°C (104°F)
	Storage:	-15°C (5°F)~40°C (104°F)
Nominal Operating Temp. Range	25±3°C (77±5°F)	
Acceptable Float Voltage Range	13.5V-13.8V at 25°C (77°F)	
Container Material	ABS (UL94 V-0) flame retardant case	
Self Discharge	≤ 3% of capacity declined per month at 25°C (77°F)	



### Applications

- Uninterruptible Power Supply (UPS)
- Emergency power supply
- Emergency lighting
- Electronic apparatus and equipment
- Solar power systems



### Constant Current Discharge (Amperes Per Battery) at 25°C (77°F)

F.V. (V/cell) \ Discharge Time	5min	10min	15min	30min	1h	2h	3h	5h	8h	10h	20h
1.60V	234.2	155.6	123.8	70.8	38.9	22.0	15.5	10.1	6.88	5.68	2.99
1.67V	217.6	145.5	118.7	68.3	37.8	21.6	15.2	9.88	6.71	5.56	2.91
1.70V	200.9	137.7	110.9	66.0	36.6	21.0	15.0	9.69	6.59	5.45	2.86
1.75V	185.3	126.4	103.4	62.8	35.4	20.6	14.6	9.47	6.45	5.36	2.81
1.80V	160.4	114.2	95.70	60.0	34.2	20.0	14.2	9.28	6.33	5.26	2.75
1.85V	134.8	100.4	84.50	55.8	32.5	19.2	13.7	8.99	6.16	5.13	2.64

### Constant Power Discharge (Watts Per Cell) at 25°C (77°F)

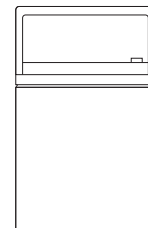
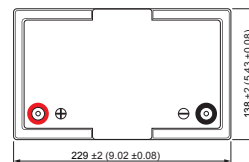
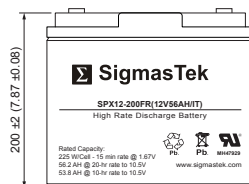
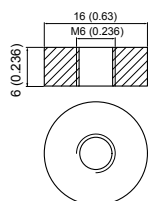
F.V. (V/cell) \ Discharge Time	5min	10min	15min	30min	1h	2h	3h	5h	8h	10h	20h
1.60V	432.7	289.8	232.3	134.8	75.2	42.7	30.4	20.0	13.6	11.3	5.98
1.67V	406.6	274.0	225.1	131.4	73.7	42.3	30.0	19.6	13.4	11.2	5.89
1.70V	378.4	261.2	211.5	127.6	71.8	41.4	29.7	19.3	13.3	11.0	5.81
1.75V	353.2	242.4	199.6	122.7	70.0	41.0	29.2	19.0	13.1	10.9	5.75
1.80V	308.7	221.1	186.4	118.1	68.0	39.9	28.6	18.8	12.9	10.8	5.65
1.85V	262.3	196.5	166.3	110.9	65.0	38.5	27.7	18.3	12.6	10.5	5.46

### Dimensions

#### IT Terminal

Unit: mm (inches)

Torque: 48 inch-pounds



### Contact Information

SigmasTek  
7651 W 100th Place  
Bridgeview, IL 60455, USA

T: (888) 988-8290  
www.sigmastek.com  
order@sigmastek.com