

### Specifications

Nominal Voltage	2V	
Nominal Capacity (10HR)	1500AH	
Dimension	Length	403mm (15.87 inches)
	Width	354mm (13.94 inches)
	Height	339mm (13.35 inches)
	Total Height (with Terminal)	349mm (13.74 inches)
	Approximate Weight	98.0 kg (216.1 lbs)
Battery Type	Valve Regulated Lead-Acid Battery, AGM Design	
Terminal Type	IT	
Rated Capacity	1600.0AH	(20hr, 1.80V/cell, 25°C/77°F)
	1500.0AH	(10hr, 1.80V/cell, 25°C/77°F)
	1331.0AH	(5hr, 1.75V/cell, 25°C/77°F)
	1158.0AH	(3hr, 1.75V/cell, 25°C/77°F)
	901.0AH	(1hr, 1.60V/cell, 25°C/77°F)
Max. Discharge Current	12000A	
Internal Resistance	0.35mΩ	
Operating Temp. Range	Discharge:	-15°C (5°F)~50°C (122°F)
	Charge:	0°C (32°F)~40°C (104°F)
	Storage:	-15°C (5°F)~40°C (104°F)
Nominal Operating Temp. Range	25±3°C (77±5°F)	
Container Material	ABS (Option: 94-HB & 94-V0 flame retardant case)	
Capacity affected by Temperature	40°C (104°F)	103%
	25°C (77°F)	100%
	0°C (32°F)	86%
Self Discharge	SigmasTek SPL series batteries may be stored for up to 6 months at 25°C (77°F) and then a freshening charge is recommended. For higher temperatures the time interval will be shorter.	



### Applications

- Tele - communication central station (wired or cellular)
- Military communication
- Data and television signal transmission
- UPS
- EPS



### Constant Current Discharge (Amperes Per Battery) at 25°C (77°F)

F.V. (V/cell) \ Discharge Time	30min	45min	1h	2h	3h	4h	5h	6h	8h	10h	20h
1.60V	1455.8	1110.1	901.0	555.0	414.0	332.8	280.6	243.0	193.1	157.8	82.7
1.65V	1407.6	1081.0	880.2	544.5	407.0	328.2	276.6	239.7	190.3	155.6	82.1
1.70V	1341.9	1035.9	849.7	527.3	398.0	321.3	270.8	235.6	187.5	153.8	81.3
1.75V	1278.9	998.3	820.9	507.0	386.0	314.4	266.2	231.5	184.3	152.0	80.4
1.80V	1207.7	949.4	786.8	487.5	373.5	304.1	258.3	226.2	180.8	150.0	80.0
1.85V	1125.5	902.4	752.4	466.5	356.0	291.1	247.9	216.5	173.3	144.5	77.3

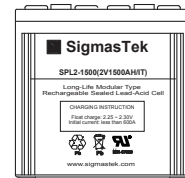
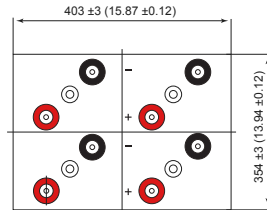
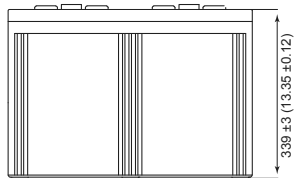
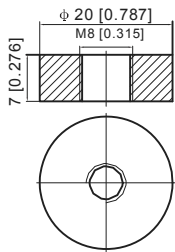
### Constant Power Discharge (Watts Per Cell) at 25°C (77°F)

F.V. (V/cell) \ Discharge Time	30min	45min	1h	2h	3h	4h	5h	6h	8h	10h	20h
1.60V	2668.6	2061.9	1694.7	1054.5	792.5	640.6	542.8	473.2	379.1	311.8	163.7
1.65V	2606.3	2026.9	1667.3	1041.0	783.1	634.5	537.2	468.1	374.3	307.8	162.8
1.70V	2503.3	1953.3	1618.6	1012.3	769.2	623.3	527.8	461.6	369.8	304.8	161.3
1.75V	2406.0	1895.5	1572.1	977.50	748.8	612.5	520.4	454.3	363.8	301.4	159.6
1.80V	2289.4	1813.4	1513.4	943.70	726.5	594.4	506.5	445.1	357.6	297.9	159.1
1.85V	2151.0	1735.0	1455.4	907.40	695.7	570.9	488.3	427.8	343.8	287.3	153.9

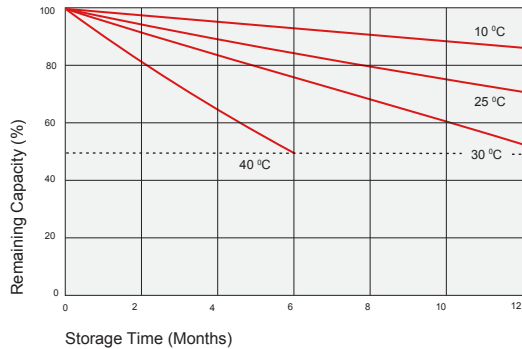
## Dimensions

### IT Terminal

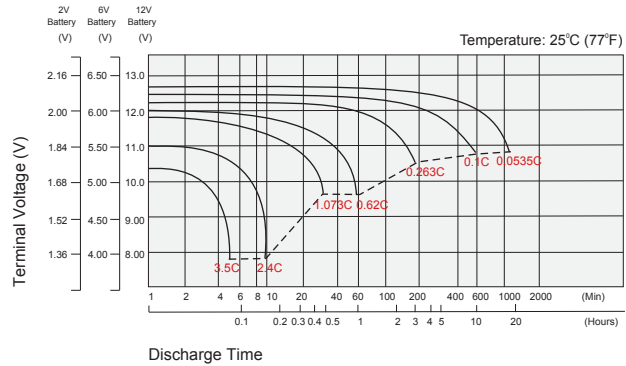
Unit: mm (inches)



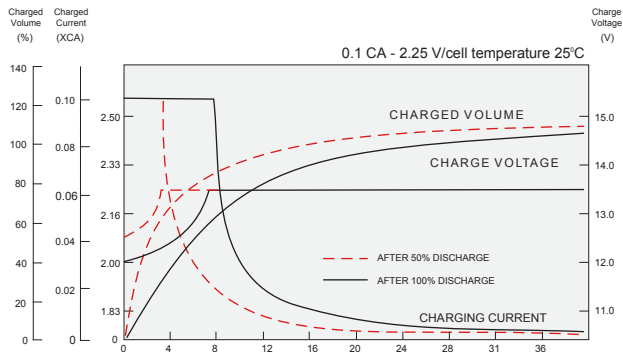
## Self Discharge Characteristics



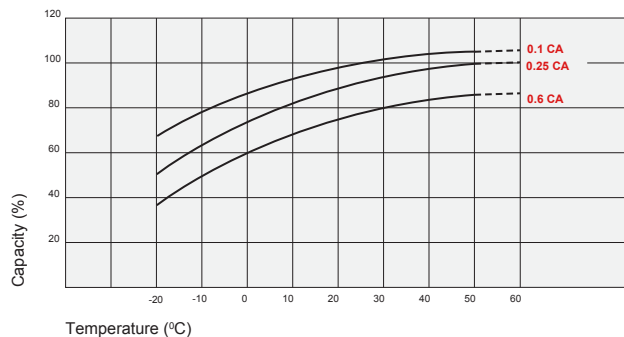
## Discharge Characteristics



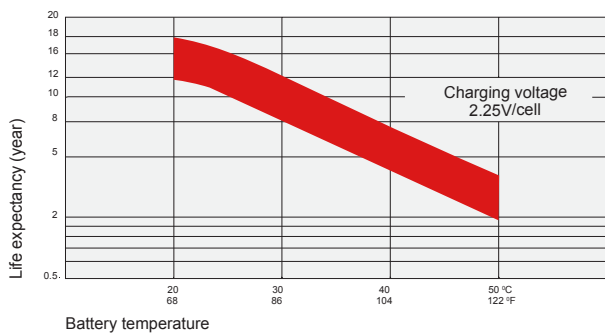
## Float Charging Characteristics



## Temperature Effects in Relation to Battery Capacity



## Temperature Effects on Long Term Float Life



## Contact Information

SigmasTek  
7651 W 100th Place  
Bridgeview, IL 60455, USA

T: (888) 988-8290  
www.sigmastek.com  
order@sigmastek.com