

### Specifications

Nominal Voltage	12V	
Nominal Capacity (20HR)	61AH	
Dimension	Length	259mm (10.2 inches)
	Width	174mm (6.85 inches)
	Height	173mm (6.81 inches)
	Total Height (with Terminal)	179mm (7.05 inches)
Approximate Weight	19.5 kg (43.0 lbs)	
Battery Type	Valve Regulated Lead-Acid Battery, Gel Design	
Terminal Type	IT	
Rated Capacity	61.2AH	(20hr, 1.75V/cell, 25°C/77°F)
	55.8AH	(10hr, 1.75V/cell, 25°C/77°F)
	47.2AH	(5hr, 1.75V/cell, 25°C/77°F)
	44.7AH	(3hr, 1.60V/cell, 25°C/77°F)
	33.1AH	(1hr, 1.60V/cell, 25°C/77°F)
Max. Discharge Current	600A	
Internal Resistance	8.8mΩ	
Operating Temp. Range	Discharge:	-20°C (-4°F)~55°C (131°F)
	Charge:	0°C (32°F)~40°C (104°F)
	Storage:	-20°C (-4°F)~50°C (122°F)
Nominal Operating Temp. Range	25±3°C (77±5°F)	
Container Material	ABS (Option: 94-HB & 94-V0 flame retardant case)	
Capacity affected by Temperature	40°C (104°F)	103%
	25°C (77°F)	100%
	0°C (32°F)	86%
Self Discharge	SigmasTek SPG series batteries may be stored for up to 9 months at 25°C (77°F) and then a freshening charge is recommended. For higher temperatures the time interval will be shorter.	



### Applications

- Uninterruptible Power Supply (UPS)
- Electric wheelchairs, scooters, bikes
- Electronic apparatus and equipment
- Alarm and security systems
- Emergency first responder equipment
- Emergency lighting
- Medical devices
- Electric carts
- Telecom equipment
- Switchgear
- Solar power systems



### Constant Current Discharge (Amperes Per Battery) at 25°C (77°F)

F.V. (V/cell) \ Discharge Time	20min	30min	45min	1h	2h	3h	4h	5h	8h	10h	20h
1.60V	73.3	55.3	41.0	33.1	19.8	14.9	12.1	10.1	6.98	5.89	3.17
1.67V	69.5	52.8	39.8	32.2	19.3	14.6	11.8	9.92	6.86	5.78	3.13
1.70V	65.7	50.5	38.5	31.1	18.7	14.2	11.5	9.68	6.75	5.71	3.10
1.75V	61.4	47.4	36.2	29.5	17.9	13.7	11.1	9.44	6.56	5.58	3.06
1.80V	55.1	43.2	33.5	27.5	17.1	13.2	10.8	9.20	6.35	5.47	3.00
1.85V	49.0	38.9	30.4	25.5	15.9	12.2	10.2	8.71	6.13	5.24	2.88

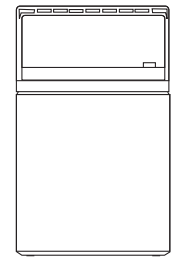
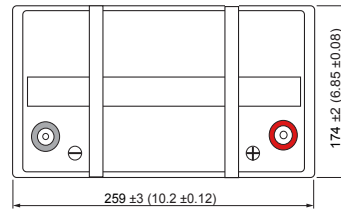
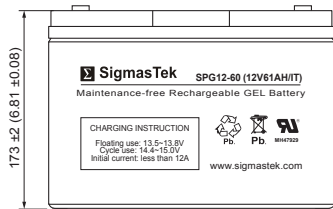
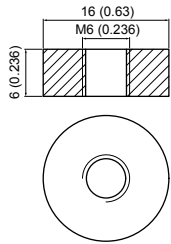
### Constant Power Discharge (Watts Per Cell) at 25°C (77°F)

F.V. (V/cell) \ Discharge Time	20min	30min	45min	1h	2h	3h	4h	5h	8h	10h	20h
1.60V	132.4	101.7	76.7	62.8	37.9	28.7	23.4	19.7	13.7	11.7	6.30
1.67V	126.9	98.0	75.1	61.3	37.0	28.2	22.9	19.4	13.5	11.5	6.22
1.70V	121.4	94.7	73.0	59.6	36.1	27.5	22.4	18.9	13.3	11.3	6.16
1.75V	114.9	89.7	69.3	56.8	34.7	26.7	21.8	18.5	13.0	11.1	6.09
1.80V	104.2	82.5	64.5	53.3	33.3	25.7	21.2	18.1	12.6	10.9	5.98
1.85V	93.50	74.7	58.8	49.5	31.0	23.9	20.1	17.2	12.2	10.4	5.75

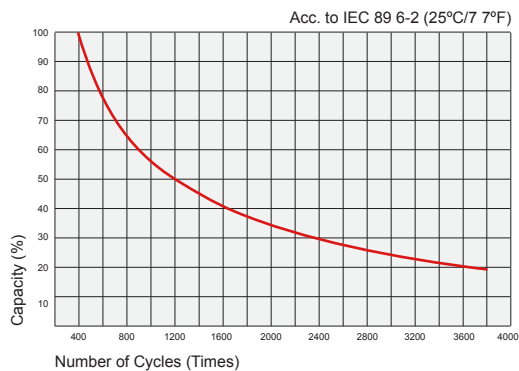
## Dimensions

### IT Terminal

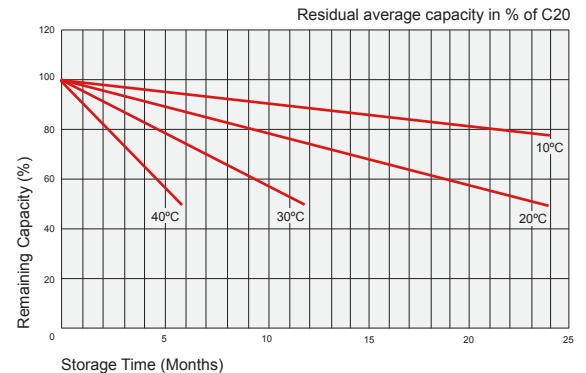
Unit: mm (inches)



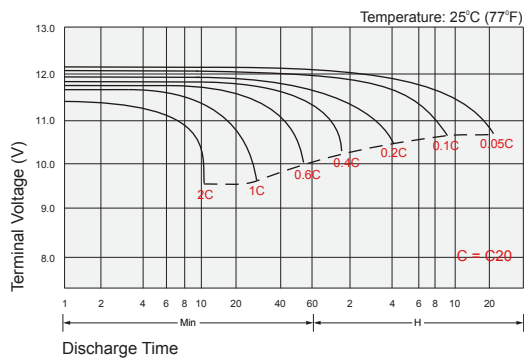
## Cycle Service Life



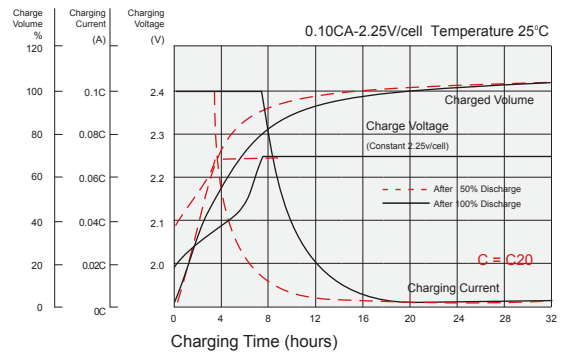
## Self Discharge Characteristics



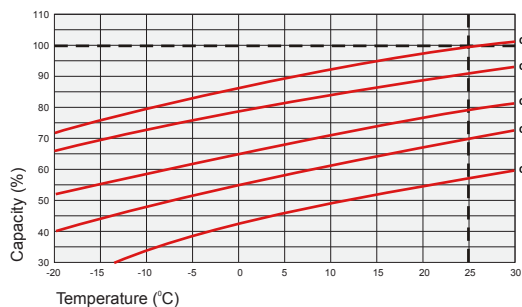
## Discharge Characteristics



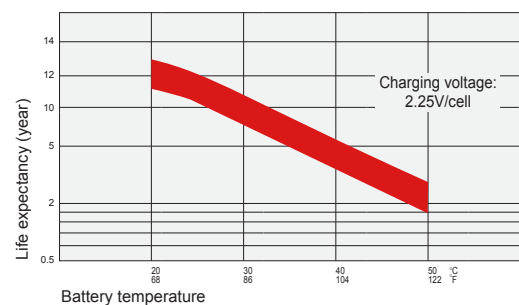
## Float Charging Characteristics



## Temperature Effects in Relation to Battery Capacity



## Temperature Effects on Long Term Float Life



## Contact Information

SigmatTek  
7651 W 100th Place  
Bridgeview, IL 60455, USA

T: (888) 988-8290  
www.sigmastek.com  
order@sigmastek.com