

### Specifications

Nominal Voltage	12V	
Nominal Capacity (20HR)	26AH	
Dimension	Length	166mm (6.54 inches)
	Width	175mm (6.89 inches)
	Height	125mm (4.92 inches)
	Total Height (with Terminal)	125mm (4.92 inches)
	Approximate Weight	8.70 kg (19.20 lbs)
Battery Type	Valve Regulated Lead-Acid Battery, Gel Design	
Terminal Type	IT	
Rated Capacity	26.6AH	(20hr, 1.75V/cell, 25°C/77°F)
	24.2AH	(10hr, 1.75V/cell, 25°C/77°F)
	20.8AH	(5hr, 1.75V/cell, 25°C/77°F)
	20.2AH	(3hr, 1.60V/cell, 25°C/77°F)
	15.2AH	(1hr, 1.60V/cell, 25°C/77°F)
Max. Discharge Current	312A	
Internal Resistance	13.5mΩ	
Operating Temp. Range	Discharge:	-20°C (-4°F)~55°C (131°F)
	Charge:	0°C (32°F)~40°C (104°F)
	Storage:	-20°C (-4°F)~50°C (122°F)
Nominal Operating Temp. Range	25±3°C (77±5°F)	
Container Material	ABS (Option: 94-HB & 94-V0 flame retardant case)	
Capacity affected by Temperature	40°C (104°F)	103%
	25°C (77°F)	100%
	0°C (32°F)	86%
Self Discharge	SigmasTek SPG series batteries may be stored for up to 9 months at 25°C (77°F) and then a freshening charge is recommended. For higher temperatures the time interval will be shorter.	



### Applications

- Uninterruptible Power Supply (UPS)
- Electric wheelchairs, scooters, bikes
- Electronic apparatus and equipment
- Alarm and security systems
- Emergency first responder equipment
- Emergency lighting
- Medical devices
- Electric carts
- Telecom equipment
- Switchgear
- Solar power systems



### Constant Current Discharge (Amperes Per Battery) at 25°C (77°F)

F.V. (V/cell) \ Discharge Time	20min	30min	45min	1h	2h	3h	4h	5h	8h	10h	20h
1.60V	34.4	25.3	18.5	15.2	9.07	6.74	5.38	4.51	3.02	2.55	1.38
1.67V	31.7	23.6	17.3	14.3	8.72	6.48	5.19	4.38	2.97	2.50	1.36
1.70V	30.5	22.7	16.7	13.8	8.50	6.28	5.06	4.29	2.93	2.48	1.34
1.75V	28.3	21.2	15.7	13.0	8.02	6.03	4.90	4.16	2.84	2.42	1.33
1.80V	25.2	19.3	14.5	12.2	7.57	5.71	4.68	4.00	2.75	2.37	1.30
1.85V	22.0	17.3	13.2	11.0	6.99	5.33	4.41	3.81	2.63	2.27	1.25

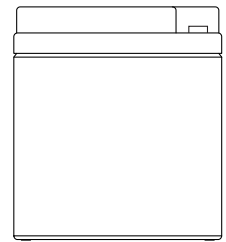
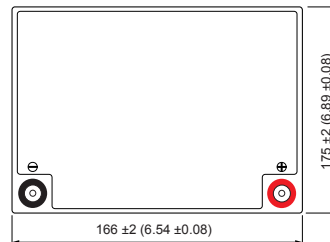
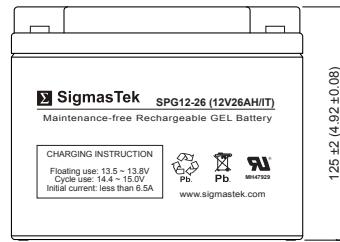
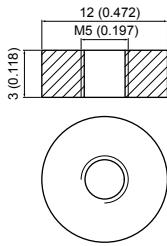
### Constant Power Discharge (Watts Per Cell) at 25°C (77°F)

F.V. (V/cell) \ Discharge Time	20min	30min	45min	1h	2h	3h	4h	5h	8h	10h	20h
1.60V	62.2	46.4	34.7	28.8	17.3	13.0	10.4	8.78	5.95	5.06	2.73
1.67V	58.0	43.8	32.5	27.2	16.7	12.5	10.1	8.54	5.86	4.97	2.69
1.70V	56.4	42.6	31.6	26.4	16.4	12.2	9.86	8.39	5.78	4.92	2.67
1.75V	52.9	40.1	30.0	25.1	15.6	11.8	9.57	8.16	5.62	4.81	2.64
1.80V	47.6	36.8	28.0	23.6	14.7	11.1	9.17	7.88	5.46	4.72	2.59
1.85V	42.1	33.3	25.5	21.5	13.7	10.4	8.68	7.52	5.23	4.53	2.49

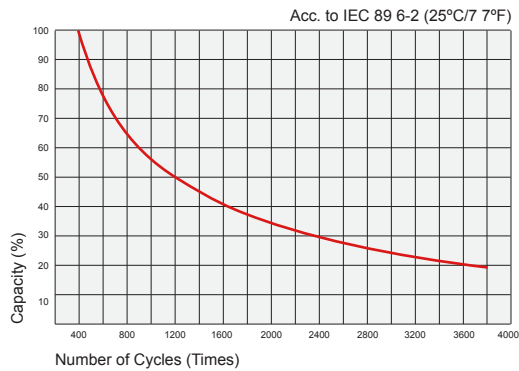
## Dimensions

### IT Terminal

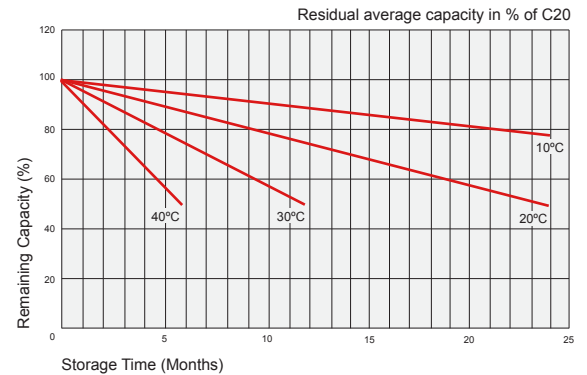
Unit: mm (inches)



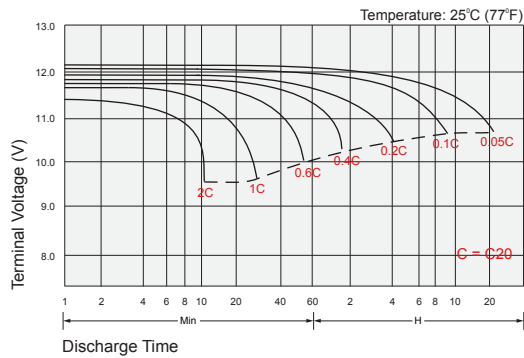
## Cycle Service Life



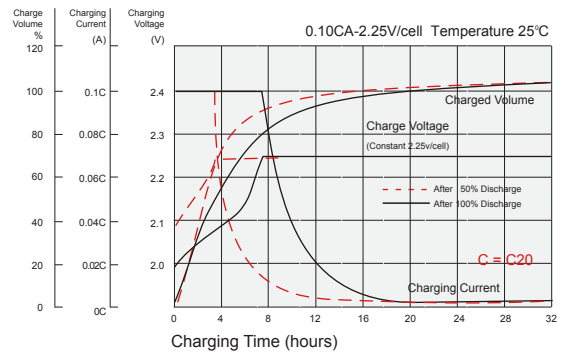
## Self Discharge Characteristics



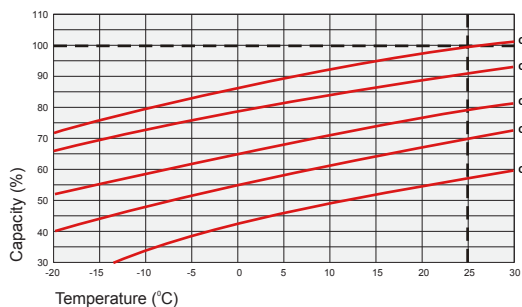
## Discharge Characteristics



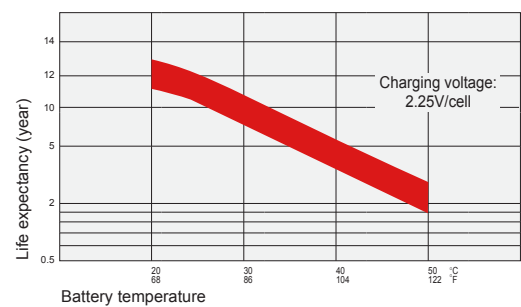
## Float Charging Characteristics



## Temperature Effects in Relation to Battery Capacity



## Temperature Effects on Long Term Float Life



## Contact Information

SigmasTek  
7651 W 100th Place  
Bridgeview, IL 60455, USA

T: (888) 988-8290  
www.sigmastek.com  
order@sigmastek.com