

### Specifications

Nominal Voltage	12V	
Nominal Capacity (20HR)	18AH	
Dimension	Length	181mm (7.13 inches)
	Width	77mm (3.03 inches)
	Height	167mm (6.59 inches)
	Total Height (with Terminal)	167mm (6.59 inches)
	Approximate Weight	5.8 kg (12.80 lbs)
Battery Type	Valve Regulated Lead-Acid Battery, Gel Design	
Terminal Type	IT	
Rated Capacity	17.4AH	(20hr, 1.75V/cell, 25°C/77°F)
	15.8AH	(10hr, 1.75V/cell, 25°C/77°F)
	13.6AH	(5hr, 1.75V/cell, 25°C/77°F)
	13.2AH	(3hr, 1.60V/cell, 25°C/77°F)
	9.93AH	(1hr, 1.60V/cell, 25°C/77°F)
Max. Discharge Current	204A	
Internal Resistance	18mΩ	
Operating Temp. Range	Discharge:	-20°C (-4°F)~55°C (131°F)
	Charge:	0°C (32°F)~40°C (104°F)
	Storage:	-20°C (-4°F)~50°C (122°F)
Nominal Operating Temp. Range	25±3°C (77±5°F)	
Container Material	ABS (Option: 94-HB & 94-V0 flame retardant case)	
Capacity affected by Temperature	40°C (104°F)	103%
	25°C (77°F)	100%
	0°C (32°F)	86%
Self Discharge	SigmasTek SPG series batteries may be stored for up to 9 months at 25°C (77°F) and then a freshening charge is recommended. For higher temperatures the time interval will be shorter.	



### Applications

- Uninterruptible Power Supply (UPS)
- Electric wheelchairs, scooters, bikes
- Electronic apparatus and equipment
- Alarm and security systems
- Emergency first responder equipment
- Emergency lighting
- Medical devices
- Electric carts
- Telecom equipment
- Switchgear
- Solar power systems



### Constant Current Discharge (Amperes Per Battery) at 25°C (77°F)

F.V. (V/cell) \ Discharge Time	20min	30min	45min	1h	2h	3h	4h	5h	8h	10h	20h
1.60V	22.5	16.5	12.1	9.93	5.93	4.41	3.52	2.95	1.98	1.67	0.90
1.67V	20.8	15.4	11.3	9.35	5.70	4.24	3.39	2.86	1.94	1.64	0.89
1.70V	19.9	14.9	10.9	9.01	5.56	4.11	3.31	2.81	1.91	1.62	0.88
1.75V	18.5	13.9	10.3	8.52	5.24	3.94	3.20	2.72	1.86	1.58	0.87
1.80V	16.5	12.6	9.50	7.96	4.95	3.73	3.06	2.62	1.80	1.55	0.85
1.85V	14.4	11.3	8.61	7.21	4.57	3.49	2.89	2.49	1.72	1.48	0.82

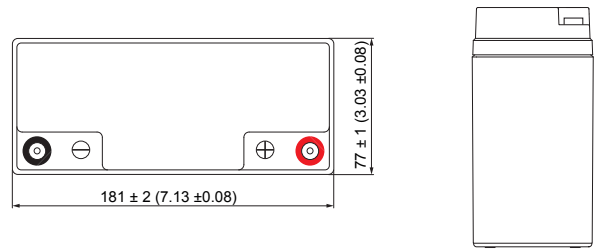
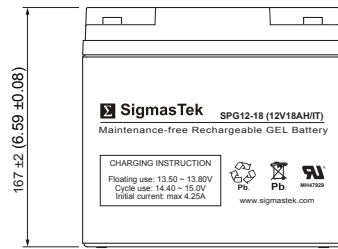
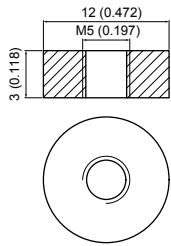
### Constant Power Discharge (Watts Per Cell) at 25°C (77°F)

F.V. (V/cell) \ Discharge Time	20min	30min	45min	1h	2h	3h	4h	5h	8h	10h	20h
1.60V	40.6	30.4	22.7	18.8	11.3	8.49	6.81	5.74	3.89	3.31	1.78
1.67V	37.9	28.6	21.3	17.8	11.0	8.20	6.59	5.58	3.83	3.25	1.76
1.70V	36.9	27.9	20.7	17.3	10.7	7.98	6.45	5.48	3.78	3.21	1.75
1.75V	34.6	26.2	19.6	16.4	10.2	7.68	6.26	5.33	3.68	3.14	1.73
1.80V	31.1	24.1	18.3	15.4	9.63	7.29	5.99	5.15	3.57	3.09	1.69
1.85V	27.5	21.8	16.7	14.0	8.94	6.83	5.68	4.92	3.42	2.96	1.63

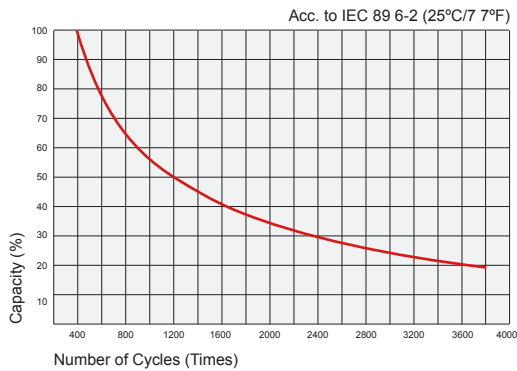
## Dimensions

### IT Terminal

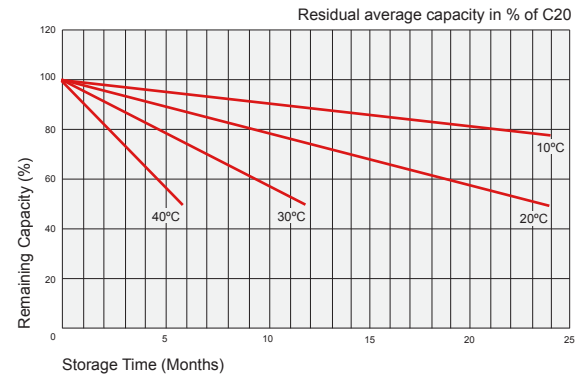
Unit: mm (inches)



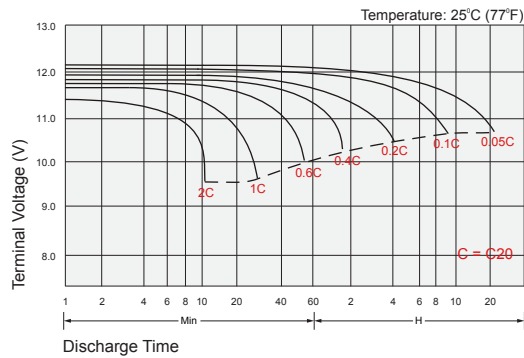
## Cycle Service Life



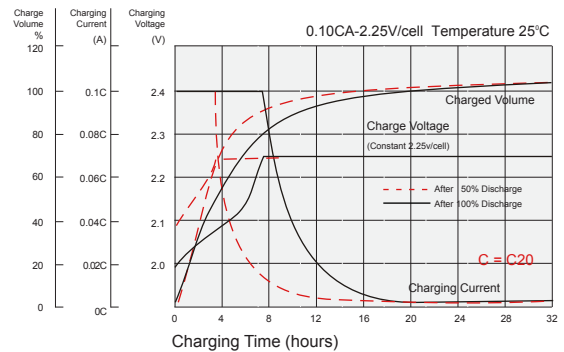
## Self Discharge Characteristics



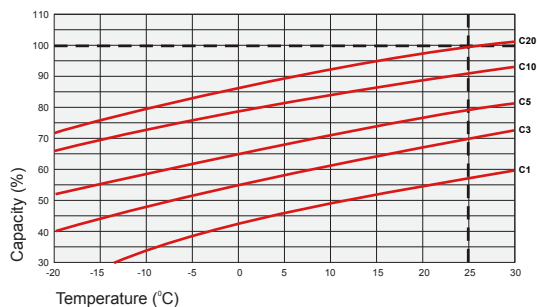
## Discharge Characteristics



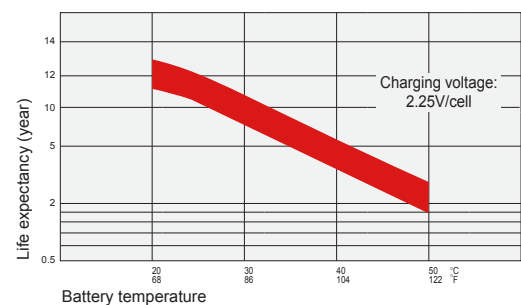
## Float Charging Characteristics



## Temperature Effects in Relation to Battery Capacity



## Temperature Effects on Long Term Float Life



## Contact Information

SigmasTek  
7651 W 100th Place  
Bridgeview, IL 60455, USA

T: (888) 988-8290  
www.sigmastek.com  
order@sigmastek.com