

### Specifications

Nominal Voltage	12V	
Nominal Capacity	159AH	20HR (1.75V/cell)
Dimension	Length	335mm (13.19 inches)
	Width	172mm (6.77 inches)
	Height	275mm (10.83 inches)
	Total Height (with Terminal)	278mm (10.94 inches)
Approximate Weight	43.91 kg (96.80 lbs)	
Battery Type	Valve Regulated Lead-Acid Battery, AGM Design	
Terminal Type	IT	
Max. Discharge Current	2015A	
Internal Resistance	3.2mΩ	
Conductance Value	1800S	
Operating Temp. Range	Discharge:	-15°C (5°F)~50°C (122°F)
	Charge:	0°C (32°F)~40°C (104°F)
	Storage:	-15°C (5°F)~40°C (104°F)
Nominal Operating Temp. Range	25±3°C (77±5°F)	
Acceptable Float Voltage Range	13.5V-13.8V at 25°C (77°F)	
Container Material	ABS (UL94 V-0) flame retardant case	
Self Discharge	≤ 3% of capacity declined per month at 25°C (77°F)	



### Applications

- Uninterruptible Power Supply (UPS)
- Emergency power supply
- Emergency lighting
- Electronic apparatus and equipment
- Solar power systems



MH47929

### Constant Current Discharge (Amperes Per Battery) at 25°C (77°F)

F.V. (V/cell) \ Discharge Time	5min	10min	15min	30min	1h	2h	3h	5h	8h	10h	20h
1.60V	507.8	369.2	304.4	190.0	109.5	61.7	43.2	28.0	19.1	15.9	8.36
1.67V	466.9	341.3	288.5	180.8	105.6	60.1	42.4	27.3	18.7	15.5	8.20
1.70V	425.9	309.7	265.0	173.3	102.0	58.2	41.2	26.7	18.3	15.3	8.06
1.75V	381.3	281.8	241.2	161.8	97.30	56.3	40.1	26.1	17.9	15.0	7.93
1.80V	327.4	252.0	217.6	150.7	92.10	54.0	38.8	25.5	17.6	14.7	7.75
1.85V	282.7	227.9	197.5	138.3	87.00	51.5	37.2	24.6	17.1	14.3	7.57

### Constant Power Discharge (Watts Per Cell) at 25°C (77°F)

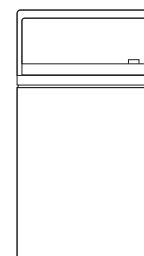
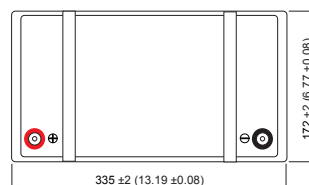
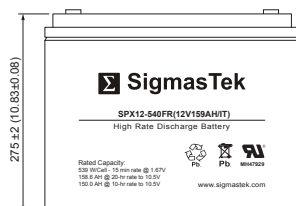
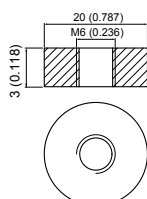
F.V. (V/cell) \ Discharge Time	5min	10min	15min	30min	1h	2h	3h	5h	8h	10h	20h
1.60V	908.9	667.5	558.6	354.4	207.5	117.7	82.9	54.3	37.5	31.3	16.6
1.67V	852.0	630.1	539.0	344.4	203.8	116.8	82.8	53.9	37.2	31.2	16.6
1.70V	785.4	577.9	499.2	332.1	197.9	113.6	80.8	53.0	36.7	30.9	16.4
1.75V	710.1	530.7	458.9	312.2	190.2	110.7	79.2	52.0	36.1	30.4	16.2
1.80V	615.4	480.8	417.8	293.0	181.3	106.8	77.1	51.1	35.6	30.0	15.9
1.85V	537.7	438.4	382.7	271.0	172.5	102.8	74.4	49.8	34.9	29.5	15.6

### Dimensions

#### IT Terminal

Unit: mm (inches)

Torque: 48 inch-pounds



### Contact Information

SigmasTek  
7651 W 100th Place  
Bridgeview, IL 60455, USA

T: (888) 988-8290  
www.sigmastek.com  
order@sigmastek.com