

Specifications

Nominal Voltage	12V	
Nominal Capacity	145AH	20HR (1.75V/cell)
Dimension	Length	335mm (13.19 inches)
	Width	172mm (6.77 inches)
	Height	275mm (10.83 inches)
	Total Height (with Terminal)	278mm (10.94 inches)
	Approximate Weight	43.49 kg (95.90 lbs)
Battery Type	Valve Regulated Lead-Acid Battery, AGM Design	
Terminal Type	IT	
Max. Discharge Current	1846A	
Internal Resistance	3.2mΩ	
Operating Temp. Range	Discharge:	-15°C (5°F)~50°C (122°F)
	Charge:	0°C (32°F)~40°C (104°F)
	Storage:	-15°C (5°F)~40°C (104°F)
Nominal Operating Temp. Range	25±3°C (77±5°F)	
Acceptable Float Voltage Range	13.5V-13.8V at 25°C (77°F)	
Container Material	ABS (UL94 V-0) flame retardant case	
Self Discharge	≤ 3% of capacity declined per month at 25°C (77°F)	



Applications

- Uninterruptible Power Supply (UPS)
- Emergency power supply
- Emergency lighting
- Electronic apparatus and equipment
- Solar power systems



Constant Current Discharge (Amperes Per Battery) at 25°C (77°F)

F.V. (V/cell) \ Discharge Time	5min	10min	15min	30min	1h	2h	3h	5h	8h	10h	20h
1.60V	463.5	347.8	278.9	174.7	103.0	58.1	41.1	26.6	17.7	14.5	7.63
1.67V	426.0	320.2	262.8	166.6	99.4	56.6	40.1	25.9	17.4	14.2	7.51
1.70V	391.7	297.6	245.7	158.2	95.6	54.7	38.9	25.4	17.1	14.0	7.38
1.75V	355.0	277.1	230.3	150.7	91.7	52.5	38.0	24.8	16.8	13.8	7.26
1.80V	310.5	243.6	210.2	143.0	87.2	50.6	36.7	24.1	16.4	13.6	7.10
1.85V	261.7	216.4	189.1	133.2	82.1	48.4	35.1	23.4	16.0	13.3	6.93

Constant Power Discharge (Watts Per Cell) at 25°C (77°F)

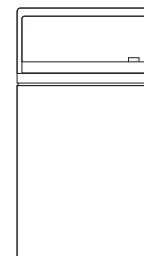
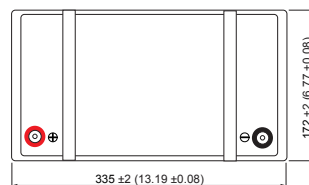
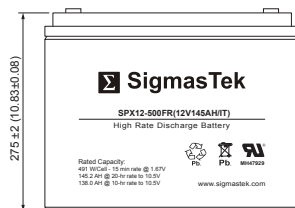
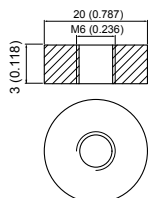
F.V. (V/cell) \ Discharge Time	5min	10min	15min	30min	1h	2h	3h	5h	8h	10h	20h
1.60V	829.6	628.8	511.8	325.9	195.1	110.8	78.8	51.5	34.6	28.6	15.2
1.67V	777.5	591.1	490.9	317.3	191.8	109.9	78.2	51.1	34.6	28.5	15.2
1.70V	722.4	555.3	462.8	303.2	185.4	106.7	76.5	50.4	34.3	28.3	15.0
1.75V	661.2	521.8	438.3	290.8	179.2	103.3	75.0	49.5	33.9	28.0	14.8
1.80V	583.6	464.8	403.5	278.1	171.7	100.2	72.9	48.3	33.3	27.7	14.6
1.85V	497.8	416.3	366.4	261.1	162.9	96.60	70.3	47.3	32.7	27.3	14.3

Dimensions

IT Terminal

Unit: mm (inches)

Torque: 48 inch-pounds



Contact Information

SigmasTek
7651 W 100th Place
Bridgeview, IL 60455, USA

T: (888) 988-8290
www.sigmastek.com
order@sigmastek.com