

Specifications

Nominal Voltage	12V	
Nominal Capacity	97AH	20HR (1.75V/cell)
Dimension	Length	305mm (12.0 inches)
	Width	168mm (6.61 inches)
	Height	207mm (8.15 inches)
	Total Height (with Terminal)	210mm (8.27 inches)
Approximate Weight	28.58 kg (63.00 lbs)	
Battery Type	Valve Regulated Lead-Acid Battery, AGM Design	
Terminal Type	IT	
Max. Discharge Current	1425A	
Internal Resistance	4mΩ	
Conductance Value	1400S	
Operating Temp. Range	Discharge:	-15°C (5°F)~50°C (122°F)
	Charge:	0°C (32°F)~40°C (104°F)
	Storage:	-15°C (5°F)~40°C (104°F)
Nominal Operating Temp. Range	25±3°C (77±5°F)	
Acceptable Float Voltage Range	13.5V-13.8V at 25°C (77°F)	
Container Material	ABS (UL94 V-0) flame retardant case	
Self Discharge	≤ 3% of capacity declined per month at 25°C (77°F)	



Applications

- Uninterruptible Power Supply (UPS)
- Emergency power supply
- Emergency lighting
- Electronic apparatus and equipment
- Solar power systems



MH47929

Constant Current Discharge (Amperes Per Battery) at 25°C (77°F)

F.V. (V/cell) \ Discharge Time	5min	10min	15min	30min	1h	2h	3h	5h	8h	10h	20h
1.60V	348.8	258.8	205.6	120.4	67.5	38.3	27.2	17.7	11.9	9.76	5.16
1.67V	321.5	242.8	195.3	116.5	65.3	37.3	26.7	17.3	11.6	9.59	5.03
1.70V	290.7	226.9	182.4	111.2	63.5	36.6	26.2	17.1	11.4	9.43	4.94
1.75V	262.2	209.2	171.4	105.8	61.6	35.8	25.7	16.7	11.2	9.25	4.86
1.80V	234.8	190.7	158.5	100.7	59.2	35.0	25.1	16.3	10.9	9.07	4.75
1.85V	209.8	171.1	145.5	95.00	56.5	33.7	24.4	15.8	10.7	8.84	4.63

Constant Power Discharge (Watts Per Cell) at 25°C (77°F)

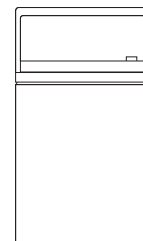
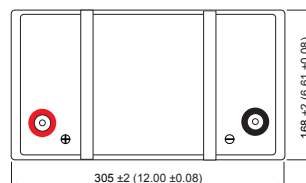
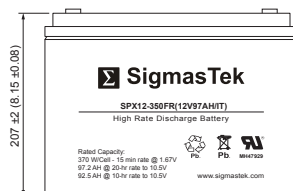
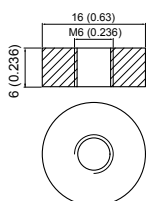
F.V. (V/cell) \ Discharge Time	5min	10min	15min	30min	1h	2h	3h	5h	8h	10h	20h
1.60V	644.5	482.0	385.7	229.1	130.2	74.5	53.2	34.9	23.6	19.4	10.3
1.67V	600.7	457.2	370.3	223.9	127.2	73.1	52.7	34.4	23.3	19.3	10.2
1.70V	547.6	430.4	348.0	214.9	124.3	72.1	52.0	34.1	23.0	19.1	10.0
1.75V	499.6	401.3	330.8	206.7	121.6	71.1	51.3	33.5	22.7	18.8	9.93
1.80V	452.1	369.2	308.6	198.3	117.7	69.9	50.4	33.1	22.3	18.6	9.76
1.85V	408.1	334.7	286.3	188.8	113.2	67.8	49.2	32.2	21.8	18.2	9.58

Dimensions

IT Terminal

Unit: mm (inches)

Torque: 48 inch-pounds



Contact Information

SigmasTek
7651 W 100th Place
Bridgeview, IL 60455, USA

T: (888) 988-8290
www.sigmastek.com
order@sigmastek.com