

Specifications

Nominal Voltage	12V	
Nominal Capacity	83AH	20HR (1.75V/cell)
Dimension	Length	259mm (10.2 inches)
	Width	168mm (6.61 inches)
	Height	208mm (8.19 inches)
	Total Height (with Terminal)	211mm (8.31 inches)
	Approximate Weight	24.86 kg (54.80 lbs)
Battery Type	Valve Regulated Lead-Acid Battery, AGM Design	
Terminal Type	IT	
Max. Discharge Current	1230A	
Internal Resistance	4.5mΩ	
Conductance Value	1250S	
Operating Temp. Range	Discharge:	-15°C (5°F)~50°C (122°F)
	Charge:	0°C (32°F)~40°C (104°F)
	Storage:	-15°C (5°F)~40°C (104°F)
Nominal Operating Temp. Range	25±3°C (77±5°F)	
Acceptable Float Voltage Range	13.5V-13.8V at 25°C(77°F)	
Container Material	ABS (UL94 V-0) flame retardant case	
Self Discharge	≤ 3% of capacity declined per month at 25°C (77°F)	



Applications

- Uninterruptible Power Supply (UPS)
- Emergency power supply
- Emergency lighting
- Electronic apparatus and equipment
- Solar power systems



Constant Current Discharge (Amperes Per Battery) at 25°C (77°F)

F.V. (V/cell) \ Discharge Time	5min	10min	15min	30min	1h	2h	3h	5h	8h	10h	20h
1.60V	326.7	227.3	180.7	106.3	58.8	32.6	23.1	15.1	10.2	8.43	4.36
1.67V	297.2	210.6	171.2	102.3	57.5	32.0	22.8	14.8	9.99	8.28	4.31
1.70V	268.6	193.4	160.1	98.10	55.9	31.4	22.4	14.6	9.82	8.14	4.24
1.75V	244.0	178.4	150.2	93.30	54.3	30.9	21.9	14.2	9.66	8.00	4.17
1.80V	214.5	158.9	138.1	89.50	52.9	30.0	21.4	13.9	9.46	7.86	4.10
1.85V	187.0	144.2	126.0	85.00	51.2	29.1	20.7	13.5	9.19	7.70	4.02

Constant Power Discharge (Watts Per Cell) at 25°C (77°F)

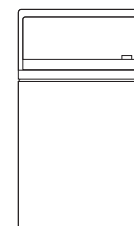
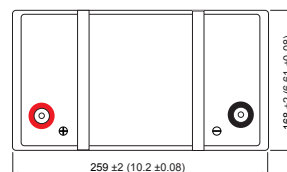
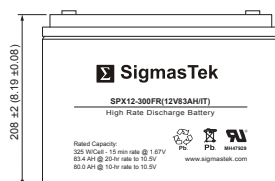
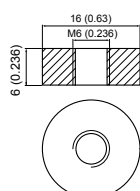
F.V. (V/cell) \ Discharge Time	5min	10min	15min	30min	1h	2h	3h	5h	8h	10h	20h
1.60V	603.6	423.4	339.1	202.3	113.5	63.3	45.1	29.7	20.2	16.8	8.73
1.67V	555.3	396.5	324.6	196.7	112.0	62.7	44.9	29.4	20.0	16.7	8.72
1.70V	506.0	366.8	216.8	189.6	109.5	61.9	44.4	29.1	19.8	16.5	8.61
1.75V	465.0	342.2	305.4	182.2	107.2	61.3	43.7	28.6	19.6	16.3	8.53
1.80V	413.0	307.7	290.0	176.4	105.2	59.9	42.9	28.1	19.3	16.1	8.42
1.85V	363.7	282.0	247.8	168.9	102.5	58.4	41.9	27.4	18.8	15.8	8.30

Dimensions

IT Terminal

Unit: mm (inches)

Torque: 48 inch-pounds



Contact Information

SigmasTek
7651 W 100th Place
Bridgeview, IL 60455, USA

T: (888) 988-8290
www.sigmastek.com
order@sigmastek.com