

Specifications

Nominal Voltage	12V	
Nominal Capacity	36AH	20HR (1.75V/cell)
Dimension	Length	195mm (7.68 inches)
	Width	130mm (5.12 inches)
	Height	164mm (6.46 inches)
	Total Height (with Terminal)	167mm (6.57 inches)
Approximate Weight	10.47 kg (23.10 lbs)	
Battery Type	Valve Regulated Lead-Acid Battery, AGM Design	
Terminal Type	IT	
Max. Discharge Current	630A	
Internal Resistance	7mΩ	
Conductance Value	700S	
Operating Temp. Range	Discharge:	-15°C (5°F)~50°C (122°F)
	Charge:	0°C (32°F)~40°C (104°F)
	Storage:	-15°C (5°F)~40°C (104°F)
Nominal Operating Temp. Range	25±3°C (77±5°F)	
Acceptable Float Voltage Range	13.5V-13.8V at 25°C (77°F)	
Container Material	ABS (UL94 V-0) flame retardant case	
Self Discharge	≤ 3% of capacity declined per month at 25°C (77°F)	



Applications

- Uninterruptible Power Supply (UPS)
- Emergency power supply
- Emergency lighting
- Electronic apparatus and equipment
- Solar power systems



Constant Current Discharge (Amperes Per Battery) at 25°C (77°F)

F.V. (V/cell) \ Discharge Time	5min	10min	15min	30min	1h	2h	3h	5h	8h	10h	20h
1.60V	166.8	109.2	82.7	48.4	26.8	14.6	10.2	6.58	4.40	3.62	1.90
1.67V	156.0	103.3	79.1	46.4	26.2	14.2	10.0	6.41	4.31	3.54	1.85
1.70V	144.0	96.60	74.9	44.6	25.5	13.9	9.70	6.27	4.20	3.48	1.82
1.75V	132.8	89.90	70.3	42.7	24.7	13.5	9.54	6.15	4.11	3.41	1.79
1.80V	118.2	82.70	65.2	40.7	23.8	13.2	9.31	6.02	4.03	3.35	1.75
1.85V	102.3	73.70	59.1	37.9	22.6	12.7	9.04	5.85	3.93	3.26	1.72

Constant Power Discharge (Watts Per Cell) at 25°C (77°F)

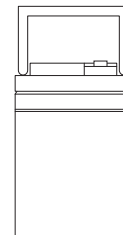
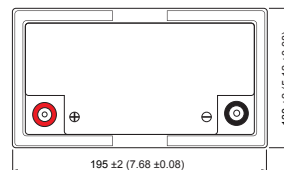
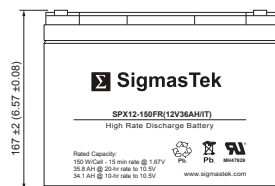
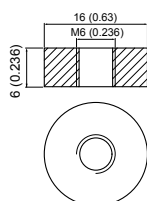
F.V. (V/cell) \ Discharge Time	5min	10min	15min	30min	1h	2h	3h	5h	8h	10h	20h
1.60V	308.1	203.4	155.2	92.2	51.7	28.3	20.0	13.0	8.73	7.21	3.81
1.67V	291.5	194.5	150.0	89.3	51.2	28.0	19.7	12.7	8.62	7.12	3.75
1.70V	271.2	183.3	142.9	86.3	49.9	27.4	19.3	12.5	8.45	7.03	3.70
1.75V	253.0	172.4	135.7	83.4	48.9	26.9	19.0	12.4	8.33	6.94	3.66
1.80V	227.6	160.2	127.1	80.1	47.4	26.3	18.7	12.2	8.22	6.85	3.59
1.85V	199.0	144.2	116.2	75.4	45.2	25.6	18.3	11.9	8.05	6.71	3.55

Dimensions

IT Terminal

Unit: mm (inches)

Torque: 48 inch-pounds



Contact Information

SigmasTek
7651 W 100th Place
Bridgeview, IL 60455, USA

T: (888) 988-8290
www.sigmastek.com
order@sigmastek.com