

### Specifications

Nominal Voltage	12V	
Nominal Capacity	28AH	20HR (1.75V/cell)
Dimension	Length	164mm (6.46 inches)
	Width	125mm (4.92 inches)
	Height	172mm (6.77 inches)
	Total Height (with Terminal)	175mm (6.89 inches)
Approximate Weight	7.89 kg (17.40 lbs)	
Battery Type	Valve Regulated Lead-Acid Battery, AGM Design	
Terminal Type	IT	
Max. Discharge Current	540A	
Internal Resistance	10mΩ	
Operating Temp. Range	Discharge:	-15°C (5°F)~50°C (122°F)
	Charge:	0°C (32°F)~40°C (104°F)
	Storage:	-15°C (5°F)~40°C (104°F)
Nominal Operating Temp. Range	25±3°C (77±5°F)	
Acceptable Float Voltage Range	13.5V-13.8V at 25°C (77°F)	
Container Material	ABS (UL94 V-0) flame retardant case	
Self Discharge	≤ 3% of capacity declined per month at 25°C (77°F)	



### Applications

- Uninterruptible Power Supply (UPS)
- Emergency power supply
- Emergency lighting
- Electronic apparatus and equipment
- Solar power systems



### Constant Current Discharge (Amperes Per Battery) at 25°C (77°F)

F.V. (V/cell) \ Discharge Time	5min	10min	15min	30min	1h	2h	3h	5h	8h	10h	20h
1.60V	98.5	65.1	50.5	31.1	18.6	10.8	7.76	5.10	3.41	2.81	1.47
1.67V	94.8	63.0	48.9	30.1	18.2	10.6	7.62	4.98	3.34	2.75	1.43
1.70V	89.1	60.3	46.8	29.2	17.7	10.4	7.47	4.87	3.29	2.71	1.40
1.75V	81.1	56.4	44.8	28.3	17.3	10.2	7.32	4.75	3.22	2.66	1.38
1.80V	71.2	52.8	42.2	27.2	16.8	9.88	7.12	4.67	3.15	2.61	1.35
1.85V	62.5	47.7	39.0	25.7	15.8	9.40	6.86	4.51	3.05	2.54	1.32

### Constant Power Discharge (Watts Per Cell) at 25°C (77°F)

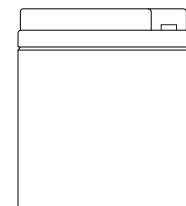
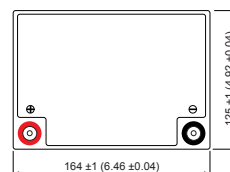
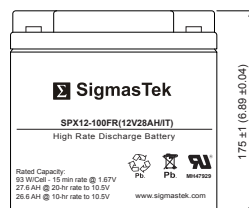
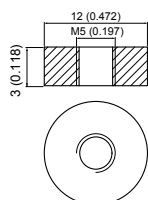
F.V. (V/cell) \ Discharge Time	5min	10min	15min	30min	1h	2h	3h	5h	8h	10h	20h
1.60V	181.9	121.3	94.8	59.3	35.9	21.0	15.2	10.0	6.77	5.61	2.94
1.67V	177.1	118.7	92.8	57.9	35.5	20.8	15.0	9.89	6.70	5.54	2.89
1.70V	167.8	114.3	89.2	56.6	34.8	20.5	14.8	9.72	6.61	5.47	2.85
1.75V	154.5	108.1	86.6	55.3	34.1	20.2	14.6	9.55	6.52	5.42	2.82
1.80V	137.1	102.2	82.2	53.6	33.4	19.8	14.3	9.45	6.42	5.33	2.77
1.85V	121.5	93.30	76.8	51.0	31.7	18.9	13.9	9.18	6.26	5.22	2.74

### Dimensions

#### IT Terminal

Unit: mm (inches)

Torque: 26.5 inch-pounds



### Contact Information

SigmasTek  
7651 W 100th Place  
Bridgeview, IL 60455, USA

T: (888) 988-8290  
www.sigmastek.com  
order@sigmastek.com