

Specifications

Nominal Voltage	2V	
Nominal Capacity (10HR)	450AH	
Dimension	Length	210mm (8.27 inches)
	Width	175mm (6.89 inches)
	Height	330mm (12.99 inches)
	Total Height (with Terminal)	350mm (13.78 inches)
	Approximate Weight	26.3 kg (58.0 lbs)
Battery Type	Valve Regulated Lead-Acid Battery, AGM Design	
Terminal Type	IT	
Rated Capacity	480.0AH	(20hr, 1.80V/cell, 25°C/77°F)
	450.0AH	(10hr, 1.80V/cell, 25°C/77°F)
	399.5AH	(5hr, 1.75V/cell, 25°C/77°F)
	347.4AH	(3hr, 1.75V/cell, 25°C/77°F)
	270.3AH	(1hr, 1.60V/cell, 25°C/77°F)
Max. Discharge Current	3600A	
Internal Resistance	0.65mΩ	
Operating Temp. Range	Discharge:	-15°C (5°F)~50°C (122°F)
	Charge:	0°C (32°F)~40°C (104°F)
	Storage:	-15°C (5°F)~40°C (104°F)
Nominal Operating Temp. Range	25±3°C (77±5°F)	
Container Material	ABS (Option: 94-HB & 94-V0 flame retardant case)	
Capacity affected by Temperature	40°C (104°F)	103%
	25°C (77°F)	100%
	0°C (32°F)	86%
Self Discharge	SigmasTek SPL series batteries may be stored for up to 6 months at 25°C (77°F) and then a freshening charge is recommended. For higher temperatures the time interval will be shorter.	



Applications

- Tele - communication central station (wired or cellular)
- Military communication
- Data and television signal transmission
- UPS
- EPS



Constant Current Discharge (Amperes Per Battery) at 25°C (77°F)

F.V. (V/cell) \ Discharge Time	15min	20min	30min	45min	1h	2h	3h	4h	5h	6h	8h	10h	20h
1.60V	666.6	569.7	436.8	333.0	270.3	166.5	124.2	99.8	84.2	72.9	57.9	47.3	24.8
1.65V	635.9	549.5	422.3	324.3	264.1	163.4	122.1	98.5	83.0	71.9	57.1	46.7	24.6
1.70V	603.5	523.7	402.6	310.8	254.9	158.2	119.4	96.4	81.2	70.7	56.3	46.1	24.4
1.75V	565.3	489.5	383.7	299.5	246.3	152.1	115.8	94.3	79.9	69.5	55.3	45.6	24.1
1.80V	514.5	454.1	362.3	284.8	236.0	146.3	112.1	91.2	77.5	67.9	54.2	45.0	24.0
1.85V	452.7	407.7	337.7	270.7	225.7	140.0	106.8	87.3	74.4	64.9	52.0	43.3	23.2

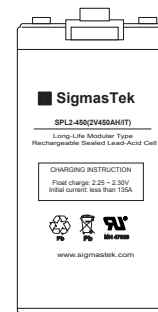
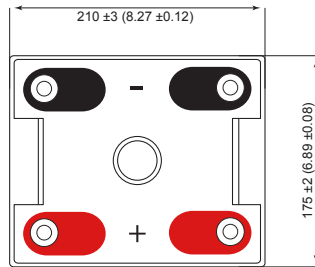
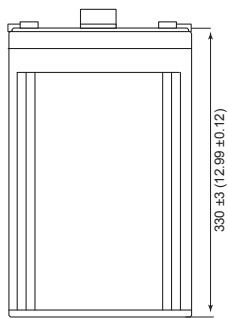
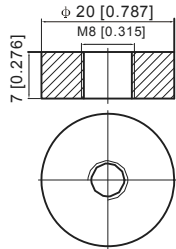
Constant Power Discharge (Watts Per Cell) at 25°C (77°F)

F.V. (V/cell) \ Discharge Time	15min	20min	30min	45min	1h	2h	3h	4h	5h	6h	8h	10h	20h
1.60V	1180.7	1027.7	800.6	618.6	508.4	316.4	237.7	192.2	162.8	141.9	113.7	93.5	49.1
1.65V	1145.3	1002.6	781.9	608.1	500.2	312.3	234.9	190.4	161.2	140.4	112.3	92.4	48.8
1.70V	1100.6	966.00	751.0	586.0	485.6	303.7	230.8	187.0	158.3	138.5	110.9	91.4	48.4
1.75V	1041.6	910.60	721.8	568.7	471.6	293.3	224.7	183.7	156.1	136.3	109.1	90.4	47.9
1.80V	961.60	854.60	686.8	544.0	454.0	283.1	217.9	178.3	152.0	133.5	107.3	89.4	47.7
1.85V	857.10	775.50	645.3	520.5	436.6	272.2	208.7	171.3	146.5	128.3	103.1	86.2	46.2

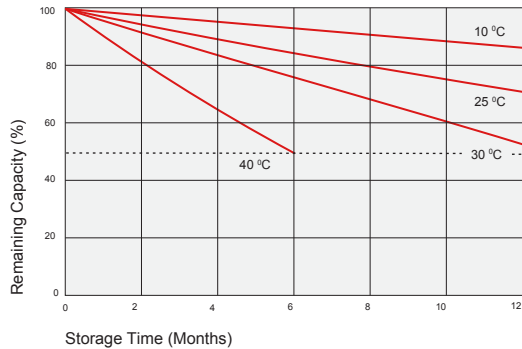
Dimensions

IT Terminal

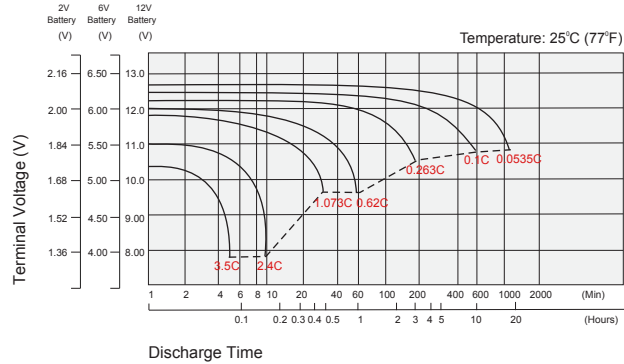
Unit: mm (inches)



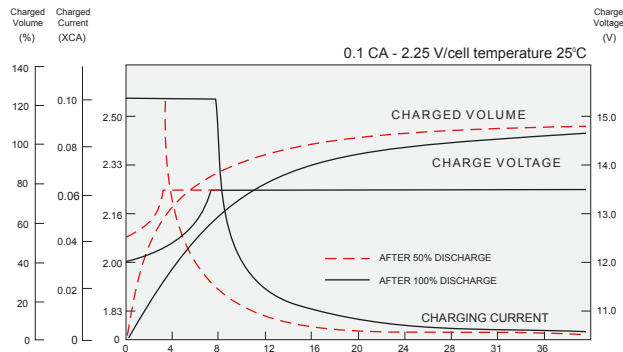
Self Discharge Characteristics



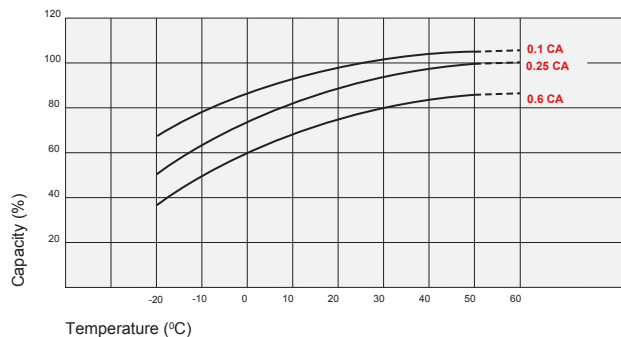
Discharge Characteristics



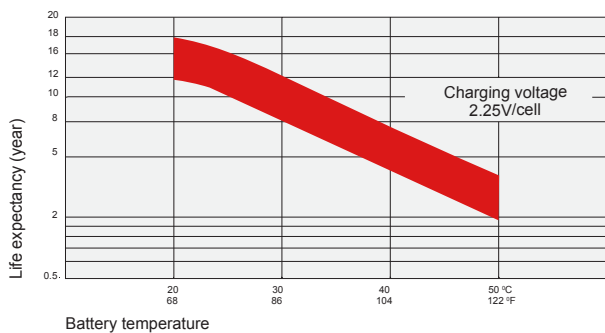
Float Charging Characteristics



Temperature Effects in Relation to Battery Capacity



Temperature Effects on Long Term Float Life



Contact Information

SigmatTek
7651 W 100th Place
Bridgeview, IL 60455, USA

T: (888) 988-8290
www.sigmastek.com
order@sigmastek.com