

### Specifications

Nominal Voltage	2V	
Nominal Capacity (10HR)	350AH	
Dimension	Length	170mm (6.69 inches)
	Width	150mm (5.91 inches)
	Height	328mm (12.91 inches)
	Total Height (with Terminal)	350mm (13.78 inches)
	Approximate Weight	20.5 kg (45.2 lbs)
Battery Type	Valve Regulated Lead-Acid Battery, AGM Design	
Terminal Type	IT	
Rated Capacity	374.5AH	(20hr, 1.80V/cell, 25°C/77°F)
	350.0AH	(10hr, 1.80V/cell, 25°C/77°F)
	310.5AH	(5hr, 1.75V/cell, 25°C/77°F)
	270.3AH	(3hr, 1.75V/cell, 25°C/77°F)
	210.2AH	(1hr, 1.60V/cell, 25°C/77°F)
Max. Discharge Current	2800A	
Internal Resistance	0.8mΩ	
Operating Temp. Range	Discharge:	-15°C (5°F)~50°C (122°F)
	Charge:	0°C (32°F)~40°C (104°F)
	Storage:	-15°C (5°F)~40°C (104°F)
Nominal Operating Temp. Range	25±3°C (77±5°F)	
Container Material	ABS (Option: 94-HB & 94-V0 flame retardant case)	
Capacity affected by Temperature	40°C (104°F)	103%
	25°C (77°F)	100%
	0°C (32°F)	86%
Self Discharge	SigmasTek SPL series batteries may be stored for up to 6 months at 25°C (77°F) and then a freshening charge is recommended. For higher temperatures the time interval will be shorter.	



### Applications

- Tele - communication central station (wired or cellular)
- Military communication
- Data and television signal transmission
- UPS
- EPS



### Constant Current Discharge (Amperes Per Battery) at 25°C (77°F)

F.V. (V/cell) \ Discharge Time	15min	20min	30min	45min	1h	2h	3h	4h	5h	6h	8h	10h	20h
1.60V	/	443.1	339.7	259.0	210.2	129.5	96.6	77.6	65.5	56.7	45.1	36.8	19.3
1.65V	/	427.4	328.4	252.2	205.4	127.1	95.0	76.6	64.5	55.9	44.4	36.3	19.2
1.70V	469.4	407.3	313.1	241.7	198.3	123.0	92.9	75.0	63.2	55.0	43.8	35.9	19.0
1.75V	439.7	380.7	298.4	232.9	191.6	118.3	90.1	73.4	62.1	54.0	43.0	35.5	18.8
1.80V	400.2	353.2	281.8	221.5	183.6	113.8	87.2	71.0	60.3	52.8	42.2	35.0	18.7
1.85V	352.1	317.1	262.6	210.6	175.6	108.9	83.1	67.9	57.8	50.5	40.4	33.7	18.0

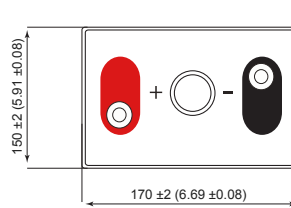
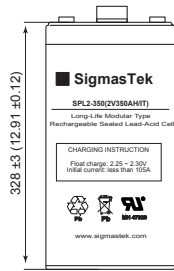
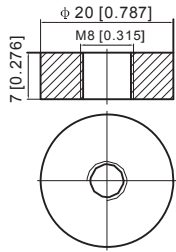
### Constant Power Discharge (Watts Per Cell) at 25°C (77°F)

F.V. (V/cell) \ Discharge Time	15min	20min	30min	45min	1h	2h	3h	4h	5h	6h	8h	10h	20h
1.60V	/	799.3	622.7	481.1	395.4	246.1	184.9	149.5	126.6	110.4	88.5	72.7	38.2
1.65V	/	779.8	608.1	472.9	389.0	242.9	182.7	148.1	125.3	109.2	87.3	71.8	38.0
1.70V	856.0	751.4	584.1	455.8	377.7	236.2	179.5	145.4	123.1	107.7	86.3	71.1	37.6
1.75V	810.1	708.3	561.4	442.3	366.8	228.1	174.7	142.9	121.4	106.0	84.9	70.3	37.2
1.80V	747.9	664.7	534.2	423.1	353.1	220.2	169.5	138.7	118.2	103.9	83.4	69.5	37.1
1.85V	666.7	603.2	501.9	404.8	339.6	211.7	162.3	133.2	113.9	99.8	80.2	67.0	35.9

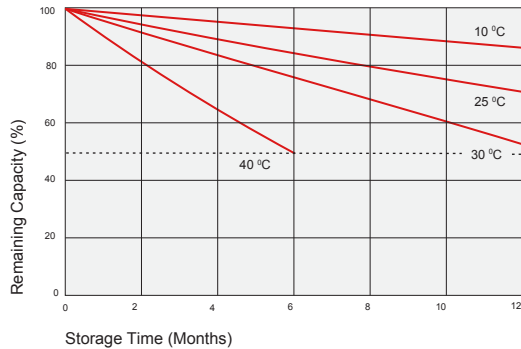
## Dimensions

### IT Terminal

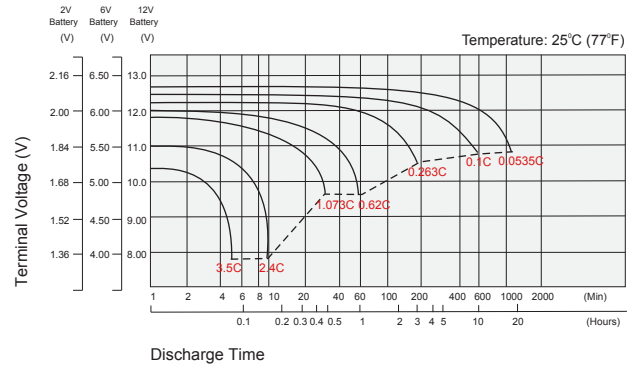
Unit: mm (inches)



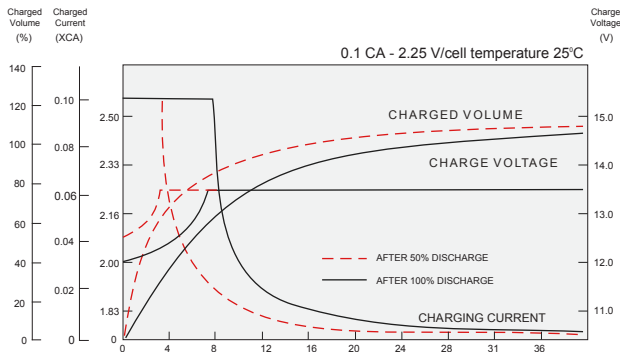
## Self Discharge Characteristics



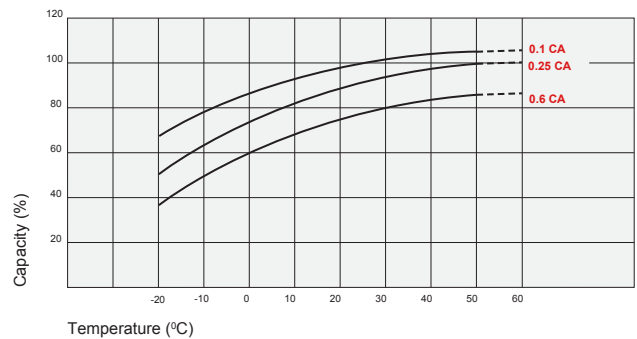
## Discharge Characteristics



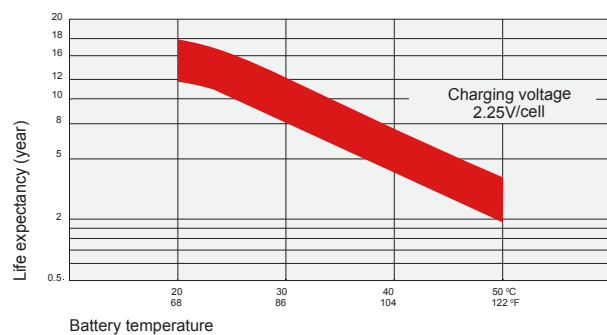
## Float Charging Characteristics



## Temperature Effects in Relation to Battery Capacity



## Temperature Effects on Long Term Float Life



## Contact Information

SigmatTek  
7651 W 100th Place  
Bridgeview, IL 60455, USA

T: (888) 988-8290  
www.sigmasstek.com  
order@sigmasstek.com