

### Specifications

Nominal Voltage	12V	
Nominal Capacity (10HR)	72AH	
Dimension	Length	259mm (10.2 inches)
	Width	168mm (6.61 inches)
	Height	208mm (8.19 inches)
	Total Height (with Terminal)	214mm (8.43 inches)
	Approximate Weight	23.0 kg (50.7 lbs)
Battery Type	Valve Regulated Lead-Acid Battery, Gel Design	
Terminal Type	IT / NB	
Rated Capacity	71.4AH	(20hr, 1.75V/cell, 25°C/77°F)
	65.1AH	(10hr, 1.75V/cell, 25°C/77°F)
	56.0AH	(5hr, 1.75V/cell, 25°C/77°F)
	54.6AH	(3hr, 1.60V/cell, 25°C/77°F)
	40.9AH	(1hr, 1.60V/cell, 25°C/77°F)
Max. Discharge Current	700A	
Internal Resistance	7.9mΩ	
Operating Temp. Range	Discharge:	-20°C (-4°F)~55°C (131°F)
	Charge:	0°C (32°F)~40°C (104°F)
	Storage:	-20°C (-4°F)~50°C (122°F)
Nominal Operating Temp. Range	25±3°C (77±5°F)	
Container Material	ABS (Option: 94-HB & 94-V0 flame retardant case)	
Capacity affected by Temperature	40°C (104°F)	103%
	25°C (77°F)	100%
	0°C (32°F)	86%
Self Discharge	SigmasTek SPG series batteries may be stored for up to 9 months at 25°C (77°F) and then a freshening charge is recommended. For higher temperatures the time interval will be shorter.	



### Applications

- Uninterruptible Power Supply (UPS)
- Electric wheelchairs, scooters, bikes
- Electronic apparatus and equipment
- Alarm and security systems
- Emergency first responder equipment
- Emergency lighting
- Medical devices
- Electric carts
- Telecom equipment
- Switchgear
- Solar power systems



### Constant Current Discharge (Amperes Per Battery) at 25°C (77°F)

F.V. (V/cell) \ Discharge Time	20min	30min	45min	1h	2h	3h	4h	5h	8h	10h	20h
1.60V	92.6	68.0	49.9	40.9	24.4	18.2	14.5	12.2	8.14	6.87	3.70
1.67V	85.5	63.6	46.5	38.5	23.5	17.5	14.0	11.8	8.00	6.74	3.65
1.70V	82.1	61.2	44.9	37.1	22.9	16.9	13.6	11.6	7.88	6.66	3.62
1.75V	76.2	57.1	42.3	35.1	21.6	16.2	13.2	11.2	7.65	6.51	3.57
1.80V	67.8	51.9	39.1	32.8	20.4	15.4	12.6	10.8	7.41	6.38	3.50
1.85V	59.2	46.5	35.5	29.7	18.8	14.4	11.9	10.3	7.07	6.11	3.36

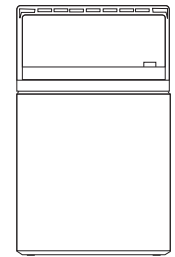
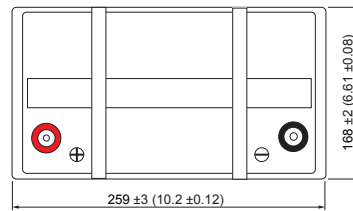
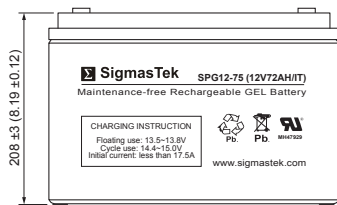
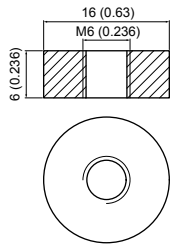
### Constant Power Discharge (Watts Per Cell) at 25°C (77°F)

F.V. (V/cell) \ Discharge Time	20min	30min	45min	1h	2h	3h	4h	5h	8h	10h	20h
1.60V	167.3	125.1	93.4	77.5	46.7	34.9	28.1	23.6	16.0	13.6	7.35
1.67V	156.2	117.9	87.6	73.3	45.1	33.8	27.1	23.0	15.8	13.4	7.25
1.70V	151.7	114.7	85.2	71.1	44.2	32.9	26.6	22.6	15.6	13.2	7.19
1.75V	142.4	108.0	80.8	67.6	41.9	31.6	25.8	22.0	15.1	12.9	7.11
1.80V	128.1	99.2	75.3	63.5	39.6	30.0	24.7	21.2	14.7	12.7	6.98
1.85V	113.3	89.6	68.8	57.8	36.8	28.1	23.4	20.3	14.1	12.2	6.71

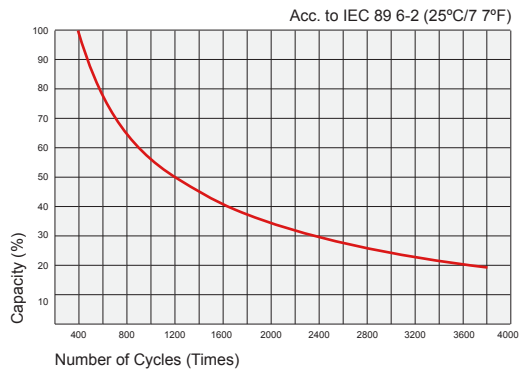
## Dimensions

### IT Terminal

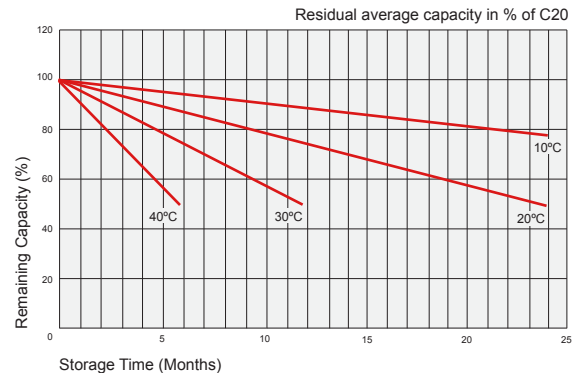
Unit: mm (inches)



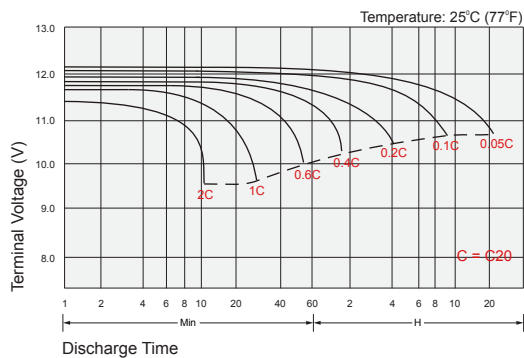
## Cycle Service Life



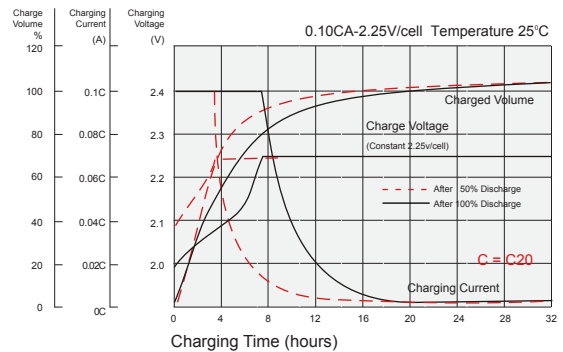
## Self Discharge Characteristics



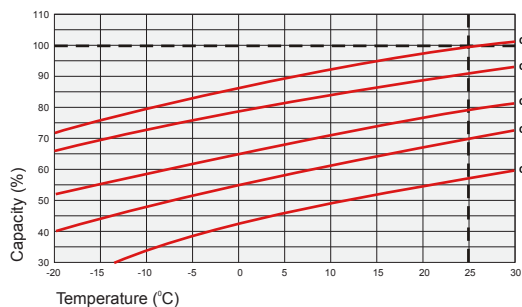
## Discharge Characteristics



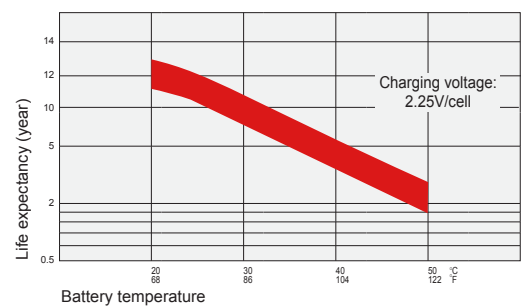
## Float Charging Characteristics



## Temperature Effects in Relation to Battery Capacity



## Temperature Effects on Long Term Float Life



## Contact Information

SigmasTek  
7651 W 100th Place  
Bridgeview, IL 60455, USA

T: (888) 988-8290  
www.sigmastek.com  
order@sigmastek.com