

Specifications

Nominal Voltage	12V	
Nominal Capacity (20HR)	130AH	
Dimension	Length	345mm (13.58 inches)
	Width	172mm (6.77 inches)
	Height	274mm (10.79 inches)
	Total Height (with Terminal)	280mm (11.02 inches)
	Approximate Weight	47.3 kg (104.3 lbs)
Battery Type	Valve Regulated Lead-Acid Battery, Gel Design	
Terminal Type	IT	
Rated Capacity	130.0AH	(20hr, 1.80V/cell, 25°C/77°F)
	121.0AH	(10hr, 1.75V/cell, 25°C/77°F)
	104.0AH	(5hr, 1.75V/cell, 25°C/77°F)
	90.60AH	(3hr, 1.75V/cell, 25°C/77°F)
	71.50AH	(1hr, 1.67V/cell, 25°C/77°F)
Max. Discharge Current	1170A	
Internal Resistance	4.5mΩ	
Operating Temp. Range	Discharge:	-20°C (-4°F)~55°C (131°F)
	Charge:	0°C (32°F)~40°C (104°F)
	Storage:	-20°C (-4°F)~50°C (122°F)
Nominal Operating Temp. Range	25±3°C (77±5°F)	
Container Material	ABS (Option: 94-HB & 94-V0 flame retardant case)	
Capacity affected by Temperature	40°C (104°F)	103%
	25°C (77°F)	100%
	0°C (32°F)	86%
Self Discharge	SigmasTek SPG series batteries may be stored for up to 9 months at 25°C (77°F) and then a freshening charge is recommended. For higher temperatures the time interval will be shorter.	



Applications

- Uninterruptible Power Supply (UPS)
- Electric wheelchairs, scooters, bikes
- Electronic apparatus and equipment
- Alarm and security systems
- Emergency first responder equipment
- Emergency lighting
- Medical devices
- Electric carts
- Telecom equipment
- Switchgear
- Solar power systems



Constant Current Discharge (Amperes Per Battery) at 25°C (77°F)

F.V. (V/cell) \ Discharge Time	20min	30min	45min	1h	2h	3h	4h	5h	6h	7h	8h	9h	10h	20h
1.60V	172.0	126.4	92.7	75.9	45.4	33.7	26.9	22.6	19.3	16.9	15.1	13.8	12.8	6.88
1.67V	158.7	118.0	86.3	71.5	43.6	32.4	25.9	21.9	18.8	16.5	14.9	13.5	12.5	6.78
1.70V	152.5	113.6	83.4	68.9	42.5	31.4	25.3	21.5	18.5	16.3	14.6	13.3	12.4	6.71
1.75V	141.6	106.1	78.5	65.1	40.1	30.2	24.5	20.8	17.9	15.8	14.2	13.0	12.1	6.63
1.80V	126.0	96.50	72.6	60.8	37.8	28.6	23.4	20.0	17.3	15.2	13.8	12.6	11.9	6.50
1.85V	110.0	86.30	65.9	55.1	35.0	26.7	22.1	19.1	16.4	14.6	13.1	12.0	11.3	6.24

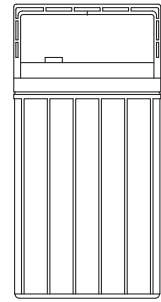
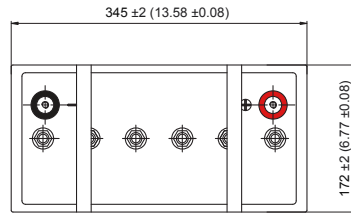
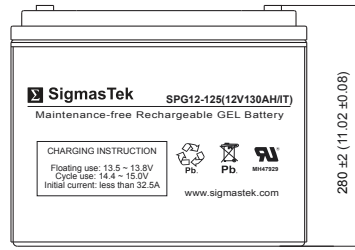
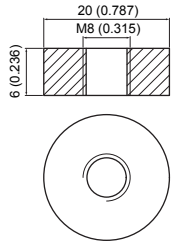
Constant Power Discharge (Watts Per Cell) at 25°C (77°F)

F.V. (V/cell) \ Discharge Time	20min	30min	45min	1h	2h	3h	4h	5h	6h	7h	8h	9h	10h	20h
1.60V	310.8	232.2	173.4	143.9	86.7	64.9	52.1	43.9	37.6	33.1	29.7	27.3	25.3	13.6
1.67V	290.0	219.0	162.7	136.2	83.7	62.7	50.4	42.7	36.8	32.5	29.3	26.7	24.8	13.5
1.70V	281.8	213.0	158.2	132.0	82.0	61.0	49.3	41.9	36.3	32.1	28.9	26.5	24.6	13.4
1.75V	264.5	200.7	150.1	125.5	77.8	58.8	47.9	40.8	35.2	31.2	28.1	25.8	24.0	13.2
1.80V	238.0	184.1	139.8	117.8	73.6	55.7	45.8	39.4	34.1	30.2	27.3	25.1	23.6	13.0
1.85V	210.5	166.3	127.7	107.3	68.3	52.2	43.4	37.6	32.6	28.9	26.1	23.9	22.6	12.5

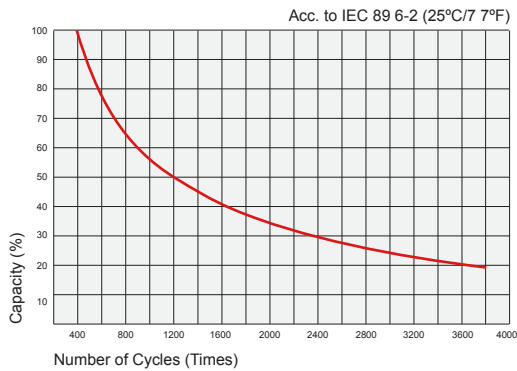
Dimensions

IT Terminal

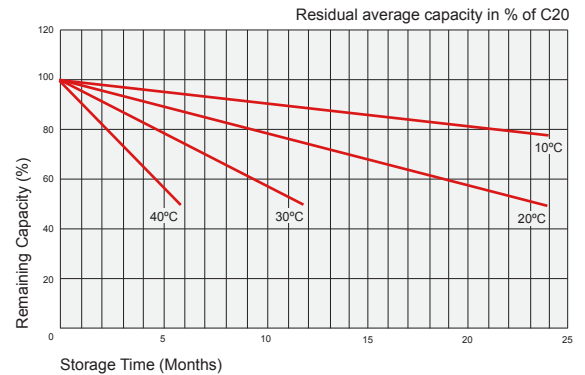
Unit: mm (inches)



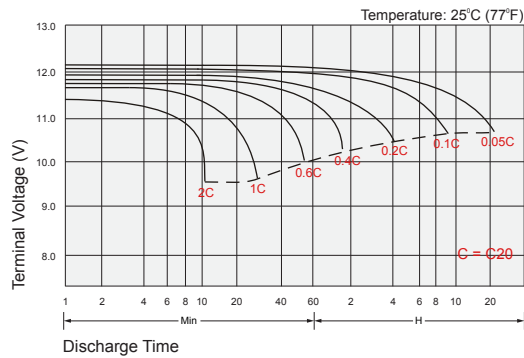
Cycle Service Life



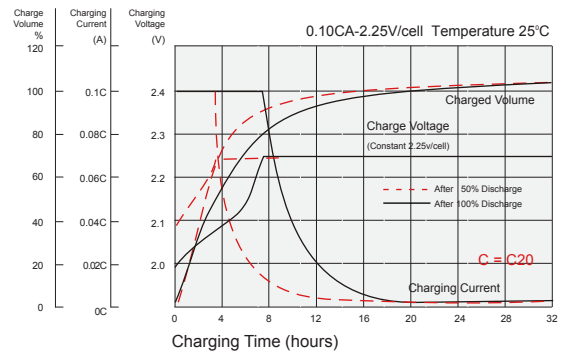
Self Discharge Characteristics



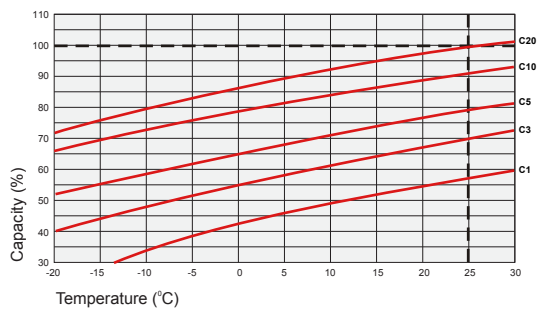
Discharge Characteristics



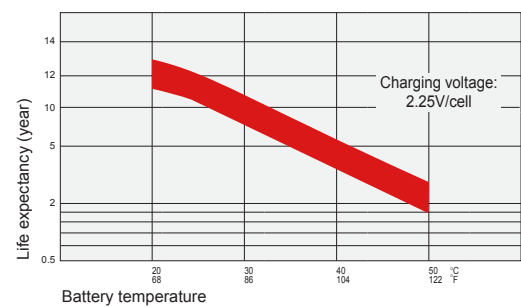
Float Charging Characteristics



Temperature Effects in Relation to Battery Capacity



Temperature Effects on Long Term Float Life



Contact Information

SigmatTek
7651 W 100th Place
Bridgeview, IL 60455, USA

T: (888) 988-8290
www.sigmastek.com
order@sigmastek.com