

Specifications

Nominal Voltage	12V	
Nominal Capacity (8HR)	70AH	
Dimension	Length	564mm (22.20 inches)
	Width	114mm (4.49 inches)
	Height	187mm (7.36 inches)
	Total Height (with Terminal)	187mm (7.36 inches)
	Approximate Weight	25.5 kg (56.2 lbs)
Battery Type	Valve Regulated Lead-Acid Battery, AGM Design	
Terminal Type	IT	
Rated Capacity	76.9AH	(20hr, 1.80V/cell, 25°C/77°F)
	72.7AH	(10hr, 1.80V/cell, 25°C/77°F)
	70.0AH	(8hr, 1.80V/cell, 25°C/77°F)
	66.0AH	(5hr, 1.75V/cell, 25°C/77°F)
	48.4AH	(1hr, 1.67V/cell, 25°C/77°F)
Max. Discharge Current	700A	
Internal Resistance	5.2mΩ	
Operating Temp. Range	Discharge:	-15°C (5°F)~50°C (122°F)
	Charge:	0°C (32°F)~40°C (104°F)
	Storage:	-15°C (5°F)~40°C (104°F)
Nominal Operating Temp. Range	25±3°C (77±5°F)	
Container Material	ABS (Option: 94-HB & 94-V0 flame retardant case)	
Capacity affected by Temperature	40°C (104°F)	103%
	25°C (77°F)	100%
	0°C (32°F)	86%
Self Discharge	SigmasTek SPF series batteries may be stored for up to 6 months at 25°C (77°F) and then a freshening charge is recommended. For higher temperatures the time interval will be shorter.	



Applications

- Standard 19 & 23 inch power cabinets
- Solar power stations
- Network communication equipment
- UPS and standby power supply
- Power station systems
- Railway and marine systems



Constant Current Discharge (Amperes Per Battery) at 25°C (77°F)

F.V. (V/cell) \ Discharge Time	10min	15min	20min	30min	45min	1h	2h	3h	4h	5h	6h	8h	10h	20h
1.60V	176.2	137.2	114.1	83.9	62.4	49.7	28.6	20.7	16.6	13.8	11.9	9.31	7.63	3.98
1.67V	167.7	132.1	109.2	81.9	60.7	48.4	28.1	20.3	16.2	13.4	11.7	9.10	7.49	3.96
1.70V	162.0	128.9	107.0	80.8	60.5	48.2	28.0	20.2	16.1	13.3	11.6	8.98	7.42	3.93
1.75V	151.5	122.4	102.9	78.5	59.2	47.6	27.6	20.0	16.0	13.2	11.4	8.86	7.35	3.91
1.80V	138.0	113.1	96.40	74.7	57.0	46.0	27.1	19.7	15.6	12.9	11.2	8.75	7.27	3.85
1.85V	121.7	101.5	87.10	68.3	53.0	43.1	25.7	18.5	14.8	12.3	10.7	8.33	6.95	3.68

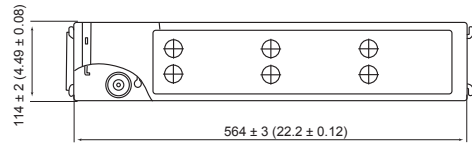
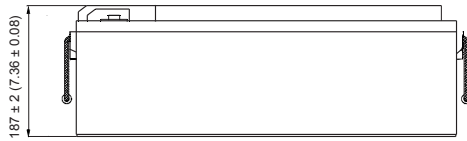
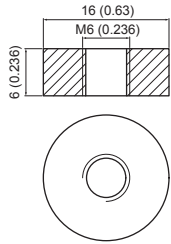
Constant Power Discharge (Watts Per Cell) at 25°C (77°F)

F.V. (V/cell) \ Discharge Time	10min	15min	20min	30min	45min	1h	2h	3h	4h	5h	6h	8h	10h	20h
1.60V	303.1	242.8	206.8	154.7	116.9	94.4	54.8	40.0	32.2	26.9	23.3	18.4	15.2	7.91
1.67V	296.5	238.6	200.8	152.9	115.2	93.0	54.3	39.4	31.7	26.3	22.9	18.0	14.9	7.88
1.70V	287.7	233.7	197.5	151.3	115.1	92.8	54.2	39.3	31.5	26.1	22.7	17.8	14.8	7.85
1.75V	275.1	225.0	191.3	147.8	112.9	91.8	53.6	39.0	31.4	26.0	22.5	17.6	14.7	7.80
1.80V	254.7	210.5	181.0	141.8	109.8	89.1	52.8	38.5	30.7	25.5	22.2	17.4	14.5	7.69
1.85V	227.3	191.4	165.9	131.6	102.9	83.9	50.4	36.4	29.3	24.3	21.2	16.6	13.9	7.37

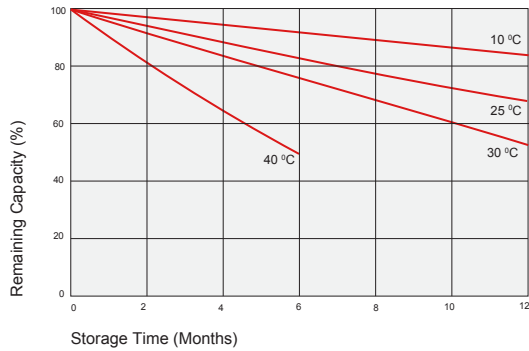
Dimensions

IT Terminal

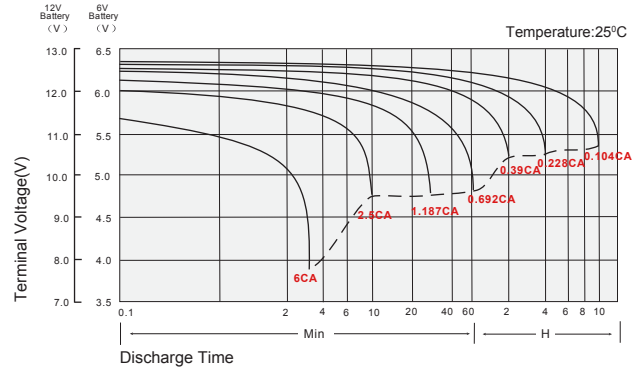
Unit: mm (inches)



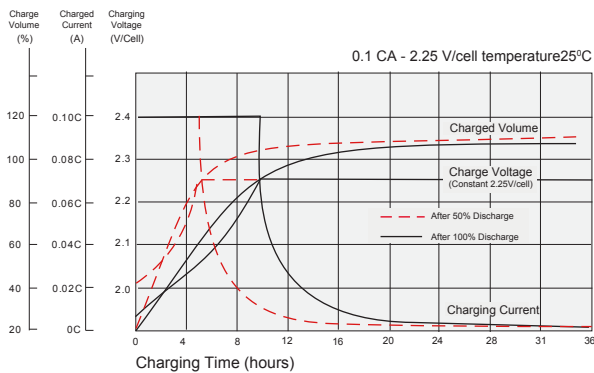
Self Discharge Characteristics



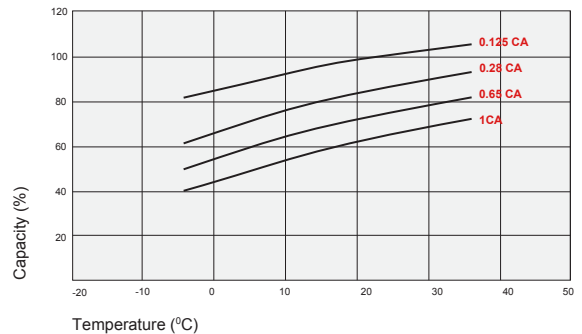
Discharge Characteristics



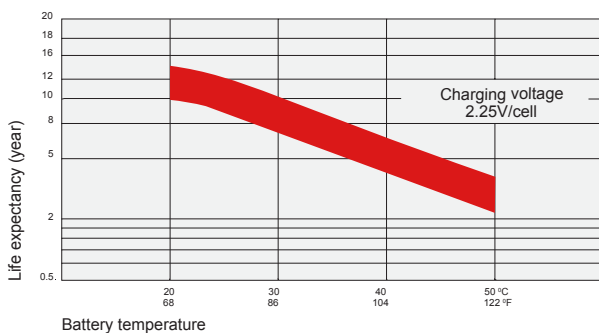
Float Charging Characteristics



Temperature Effects in Relation to Battery Capacity



Temperature Effects on Long Term Float Life



Contact Information

SigmaTek
7651 W 100th Place
Bridgeview, IL 60455, USA

T: (888) 988-8290
www.sigmastek.com
order@sigmastek.com